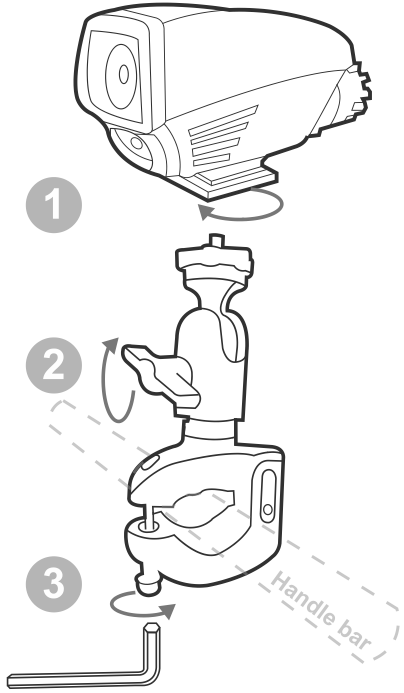
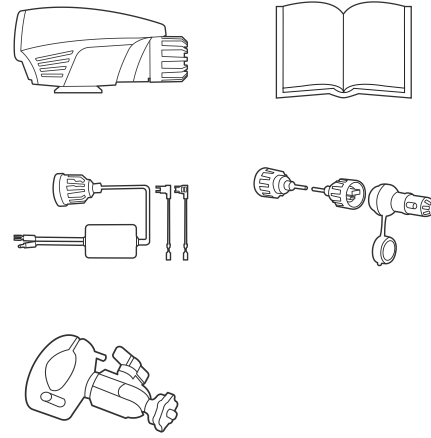




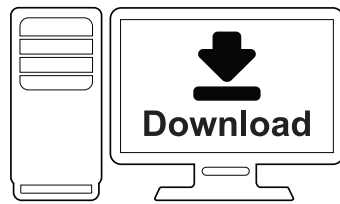
HUMMER

User Guide

| | |
|------------------------|---------------------------|
| User Guide | Snabbguide |
| Guide de l'utilisateur | Pikaopas |
| Guía de usuario | Руководство пользователя |
| Handbuch | 使用指南 |
| Uživatelská příručka | ユーザーガイド |
| Gebruiksgids | 使用指南 |
| Startvejledning | พื้นฐานการใช้งานเบื้องต้น |
| Instrukcja obsługi | מדריך למשתמש |
| Hurtigguide | دليل المستخدم |



For further information, please refer to the User Manual. You can find the download information at <http://dod-tech.ca/dod-downloads/>



<http://dod-tech.ca/dod-downloads/>

Specification (EN)

| | |
|------------------------------|--|
| Video Resolution | 1920x1080@30fps 1280x720@60fps 1280x720@30fps |
| Sensor | 14MP CMOS Sensor |
| Wide Angle Lens | 110° |
| ISO Sensitivity | AUTO |
| Display | 1.5" TFT LCD |
| Video Format | MOV |
| Recording Media | Micro SDHC/SDXC Class10(Up to 32GB) *Requires Micro SD Memory Card. |
| Audio | Mic and Speaker(Mono) Equipped |
| Battery | 3.7V 750mAh Lithium-ion Battery |
| Power Input | 5V 1.5A |
| Size | 110(L)x52(W)x56.5(H)mm |
| Weight | 168g(0.24lbs) |
| Operating Temperature | -20°C~65°C (-4°F~149°F) |

All specifications are subject to change without notice.

SPÉCIFICATIONS (FR)

| | |
|---|--|
| Résolution vidéo | 1920 x 1080 à 30 images par seconde, 1280 x 720 à 60 images par seconde 1280 x 720 à 30 images par seconde |
| Capteur | 14MP CMOS Sensor |
| Objectif grand-angle | 110° |
| Sensibilité ISO | AUTO |
| Écran | ACL TFT de 1.5 po |
| Format vidéo | MOV |
| Support d'enregistrement | Carte micro SDHC/SDXC de classe 10 (capacité de 32 Go au maximum) *Nécessite une carte mémoire micro SD. |
| Audio | Munie d'un microphone et d'un haut-parleur (mono) |
| Batterie | Batterie au lithium-ion 750 mAh 3,7 V |
| Puissance d'entrée | 5V 1.5A |
| Taille | 110 (long.) x 52(larg.) x 33,4 (haut.) mm |
| Poids | 168 g |
| Plage de température de fonctionnement | -20°C~65°C (-4°F~149°F) |

Toutes les caractéristiques peuvent être modifiées sans notification préalable.

Especificación (ES)

| | |
|---|--|
| Resolución de vídeo | 1920x1080@30fps 1280x720@60fps 1280x720@30fps |
| Sensor | 14MP CMOS Sensor |
| Lente gran angular | 110° |
| Sensibilidad ISO | AUTO |
| Monitor | 1.5" de vision amplia TFT LCD |
| Formato de vídeo | MOV |
| Medios de grabación | Micro SD clase 10 (hasta 32GB) *Requiere tarjeta de memoria Micro SD. |
| Audio | Micrófono y parlante (Mono) |
| Batería | 3.7V 750mAh Ion-litio |
| Fuente de corriente | 5V 1.5A |
| Dimensiones | 110(L)x52(W)x56.5(H)mm |
| Peso | 168g |
| Rango de la temperatura de trabajo | De -20 a 65°C (De -4°F a 149°F) |

Para la especificación complete y características, consulte el manual del usuario

Spezifikationen (DE)

| | |
|------------------------------|--|
| Video Resolution | 1920x1080@30fps 1280x720@60fps 1280x720@30fps |
| Sensor | 14MP CMOS Sensor |
| Wide Angle Lens | 110° |
| ISO Sensitivity | Up to AUTO |
| Display | 1.5" TFT LCD |
| Video Format | MOV |
| Recording Media | Micro SDHC/SDXC Class10(bis 32GB) *Micro SD Memory Card erforderlich. |
| Audio | Mikrofon und Lautsprecher (Mono) |
| Battery | 3.7V 750mAh Lithium-ion Akku |
| Power Input | 5V 1.5A |
| Size | 110(L)x52(W)x56.5(H)mm |
| Weight | 168g |
| Operating Temperature | -20°C~65°C (-4°F~149°F) |

Alle Daten können ohne Bekanntmachung geändert werden.

Špecifikácie (CZ/SK)

| | |
|---------------------------|--|
| Rozlíšenie videa | 1920x1080@30fps 1280x720@60fps 1280x720@30fps |
| Objektív | 14MP CMOS Sensor |
| Zorný uhol | 110° |
| ISO senzitivita do | AUTO |
| LCD displej | 1.5" TFT LCD |
| Video formát | MOV |
| Externá pamäť | Micro SDHC/SDXC Class10(do 32GB) *odporúčaná microSDHC/SDXC karta |
| Zvuk | Mikrofon a reproduktor(Mono) |
| Akumulátor | 3.7V 750mAh Lithium-ion akumulátor |
| Napájanie | 5V 1.5A |
| Veľkosť | 110(Š)x52(V)x56.5(H)mm |
| Hmotnosť | 168g |
| Pracovná teplota | -20°C~65°C (-4°F~149°F) |

eškeré technické parametry mohou být bez předchozího upozornění změněny.

Specificaties (NL)

| | |
|-----------------------------|--|
| Video Resolutie | 1920x1080@30fps 1280x720@60fps 1280x720@30fps |
| Sensor | 14MP CMOS Sensor |
| Groothoeklens | 110° |
| ISO Gevoeligheid | AUTO |
| Beeldscherm | 1.5" TFT LCD |
| Video Formaat | MOV |
| Opslagmedium | Micro SDHC/SDXC Class10(tot 32GB) * Micro SD Memory Card vereist. |
| Audio | Microfoon en Speaker(Mono) |
| Accu | 3.7V 750mAh Lithium-ion Accu |
| Power Input | 5V 1.5A |
| Afmeting | 110(L)x52(W)x56.5(H)mm |
| Gewicht | 168g |
| Omgevingstemperatuur | -20°C~65°C (-4°F~149°F) |

Alle specificaties kunnen zonder voorafgaande kennisgeving worden gewijzigd.

Specifikationer (DK)

| | |
|-------------------------|---|
| Opløsning | 1920x1080@60fps 1280x720@60fps 1280x720@30fps |
| Sensor | 14MP CMOS Sensor |
| Vidvinkel linse | 110° |
| ISO | AUTO |
| Display | 1.5" TFT LCD |
| Videoformat | MOV |
| Optagemedie | Micro SDHC/SDXC Class10(Op til 32GB) *Requires Micro SD Memory Card. |
| Audio | Mikrofon og højttaler (Mono) |
| Batteri | 3.7V 750mAh Lithium-ion Batteri |
| Strøm | 5V 1.5A |
| Dimensioner | 110(L)x52(W)x56.5(H)mm |
| Vægt | 168g |
| Driftstemperatur | -20°C~65°C (-4°F~149°F) |

Alle specifikationer kan ændres uden varsel.

Specyfikacja (PL)

| | |
|--------------------------------|--|
| Video Resolution | 1920x1080@60fps 1280x720@60fps 1280x720@30fps |
| Rozdzielczość wideo | 14MP CMOS Sensor |
| Kąt rejestracji | 110° |
| Czułość ISO | do AUTO |
| Wyświetlacz | 1.5" TFT LCD |
| Format wideo | MOV |
| Nośnik danych | Micro SDHC/SDXC Class10(Up to 32GB) *Requires Micro SD Memory Card. |
| Audio | Wbudowany mikrofon i głośnik - mono. |
| Bateria | 3.7V 750mAh - bateria litowo-jonowa |
| Napięcie zasilające | 5V 1.5A |
| Wymiary | 110(szer.)x52(wys.)x56.5(gr.)mm |
| Waga | 168g |
| Zakres temperatur pracy | -20°C~65°C (-4°F~149°F) |

Wszystkie specyfikacje mogą ulec zmianie bez powiadomienia.

Spesifikasjoner (NO)

| | |
|--------------------------|---|
| Video Resolution | 1920x1080@60fps 1280x720@60fps 1280x720@30fps |
| Sensor | 14MP CMOS Sensor |
| Vidvinkel linse | 110° |
| ISO | AUTO |
| Skjerm | 1.5" TFT LCD |
| Videoformat | MOV |
| Innspillingsmedia | Micro SDHC/SDXC Class10(Opp til 32GB) |
| Audio | Mikrofon og høyttaler (Mono) |
| Batteri | 3.7V 750mAh Lithium-ion batteri |
| Strøm | 5V 1.5A |
| Dimensjoner | 110(L)x52(W)x56.5(H)mm |
| Vekt | 168g |
| Driftstemperatur | -20°C~65°C (-4°F~149°F) |

Alle spesifikasjoner kan endres uten forvarsel.

Specifikationer (SV)

| | |
|--------------------------|---|
| Upplösning | 1920x1080@60fps 1280x720@60fps 1280x720@30fps |
| Sensor | 14MP CMOS Sensor |
| Vidvinkelobjektiv | 110° |
| ISO | AUTO |
| Display | 1.5" TFT LCD |
| Videoformat | MOV |
| Inspelningsmedia | Micro SDHC/SDXC Class10(Upp till 32GB) |
| Audio | Mikrofon och högtalare (Mono) |
| Batteri | 3.7V 750mAh Lithium-ion Batteri |
| Ström | 5V 1.5A |
| Mått | 110(L)x52(W)x56.5(H)mm |
| Vikt | 168g |
| Drifttemperatur | -20°C~65°C (-4°F~149°F) |

Alla specifikationer kan ändras utan föregående meddelande.

